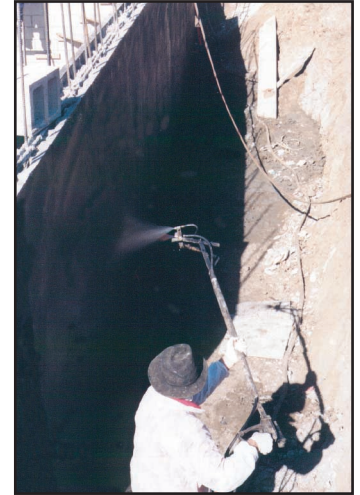


ECOLINE-S Spray Applied Membrane

Seamless Waterproofing For The Most Demanding Applications



The Answer To Seam and Adhesive Failures

- Water based ... may be applied to green or uncured concrete, damp surfaces, and lightweight forms.
- Excellent elongation and recovery ... can handle expansion and contraction as well as minor cracking.
- Exceptional bonding ... won't delaminate from surface, even with ponded water.
- Spray applied ... creates a seamless and resilient membrane.
- Instant build ... allows applications in inclement weather and eliminates shrinkage.

COVERAGES	TEST METHOD	UNITS
Walls		40 mils (28 sq. ft. / gal.)
Decks		60 mils (19 sq. ft. / gal.)
ECOLINE-S Typical Uncured Properties		
Specific Gravity	ASTM D 244	1.00
Viscosity	ASTM D 1200	>25 centipoise
PH		12.3
Flammability	ASTM D 3143	500° F
Color		Brown to Black
Non-Toxic		No Solvents
Shelf Life		6 months
ECOLINE-S Typical Cured Properties		
Tensile Strength	ASTM 412	32 psi
Elongation	ASTM 412	4,140%
Resistance to Decay	ASTM E 154 Section 13	4% Perm Loss
Accelerated Aging	ASTM G 23	No Effect
Moisture Vapor Transmission	ASTM E 96	0.026 g / sq. ft. / hr.
Hydrostatic Water Pressure	ASTM D 751	26 psi
Perm rating	ASTM E 96 (US Perms)	0.21
Methane transmission rate.....	ASTM D 1434	0
Adhesion to Concrete & Masonry	ASTM C 836 & ASTM C 704	11 lbf. / inch
Hardness	ASTM C 836	80
Crack Bridging	ASTM C 836	No Cracking
Low Temp. Flexibility	ASTM C 836-00	No Cracking at -20°C
Resistance to Acids:		
Acetic		30%
Sulfuric and Hydrochloric		13%
Temperature Effect:		
Stable		248°F
Flexible		13°F

Packaging: Available in bulk, 275 gal. totes, or 55 gal. drums. **Approvals:** City of Los Angeles Report #RR 25478, NSF

EPRO SERVICES
P.O. Box 347
Derby, KS 67037 USA



Phone: 800-882-1896
316-262-2513
Fax: 316-262-2529

ECOLINE-S Specifications

1. PRODUCT NAME

ECOLINE-S

2. MANUFACTURER

EPRO SERVICES
P.O. Box 347
Derby, KS 67037
PHONE: 800-882-1896
FAX: 316-262-2529

3. PRODUCT DESCRIPTION

Basic Use: ECOLINE-S is designed to be a waterproof and methane barrier membrane for a variety of surfaces including concrete (uncured), block, wood, and metal and for a variety of applications including decks, walls (both negative and positive side) and water retention structures. ECOLINE-S is to be applied with a unique self-contained sprayer to produce instantaneous, monolithic high-build membranes at accelerated rates. It may be used as a waterproofing adhesive for protection/insulation board or tile and as a base coat for other water-based products.

Composition: ECOLINE-S is a low-viscosity, water-based, anionic bituminous/asphalt emulsion modified with a blend of synthetic polymerized rubbers and special additives, which is highly reactive and exhibits exceptional bonding, elongation, waterproofing and build characteristics.

Benefits:

- Performs as a gas and water barrier.
- Non hazardous, non-toxic, and non-flammable (VOC compliant).
- Excellent elongation and recovery.
- Good tensile strength.
- Exceptional bonding.
- Not affected by ponded water.
- Instantaneous build.

Limitations:

- Should be applied to clean surfaces.
- Adjacent areas and surfaces should be protected from contact with the product.
- Exposure to UV.
- Should be stored above 40°F.
- A test area should always be done to verify compatibility of substrate with product.
- Solvent-based products should not be applied over this product.

4. TECHNICAL DATA

Properties: See chart.

Coverages: See chart.

• Specification Writer:

Contact EPRO Services before writing specifications on this project. Test information available upon request.

5. INSTALLATION

Preparation: Must include but not limited to:

- All surfaces should be free of loose materials, and other contaminants. These should be removed prior to application by suitable methods.
- Repairs: Any cracks, spall or metal protrusion areas should be repaired by brush or trowel application of ECOLINE-T insuring penetration of material into damaged or cracked area. Large cracks may also require a layer of polyester fabric being spanned over crack and ECOLINE-T applied over this to provide additional strength.
- A test should always be done prior to application using the same cleaning preparation and application procedures to be used on the project.

Application:

- Should be applied in accordance with specific application specifications.
- ECOLINE-S is to be spray applied with catalyst water by appropriate equipment fitted with specific nozzles which forms a monolithic water protection coating.

Spray application produces an approximate 20 mil build on each pass of spray gun.

Cleaning: Clean all tools with kerosene and/or equivalent.

6. AVAILABILITY AND COST:

Contact the local distributor and/or Authorized Applicator for availability and cost.

7. WARRANTY

Limited Warranty: EPRO warrants this product to be free from defects. EPRO makes no other warranties with respect to this product, express or implied, including without limitation the implied warranties of MERCHANTABILITY OR FITNESS FOR PARTICULAR PURPOSE. EPRO's liability shall be limited in all events to supplying sufficient product to retreat the specific areas to which defective product has been applied. EPRO shall have no other liability, including liability for incidental or resultant damages, whether due to breach of warranty or negligence. This warranty may not be modified or extended by representatives of EPRO or its distributors.

8. MAINTENANCE:

No maintenance required.

9. TECHNICAL SERVICES AND INFORMATION:

Complete technical services and information are available from EPRO Services.



Rev. ELS.010.13.99

